



W/WAS Series Ball Valves

A robotically welded body joint. Full-size ports for unrestricted flow.

These ball valves employ the latest robotic welding technology. Every continuous welded body joint is 100% factory tested to ensure positively leak-free performance. Dual PTFE ball seals surround a polished brass or carbon steel ball at each end. A secondary seal becomes effective if foreign material scores the primary seal – even in extremely unfavorable conditions such as compressor burnout – a Superior exclusive! W/WAS Series Ball Valves are constructed using a forged brass body with copper tube extensions on all sizes. Mechanical Internal forged stops ensure positive open or closed positions – another Superior exclusive. Full open to full close with 1/4 turn.



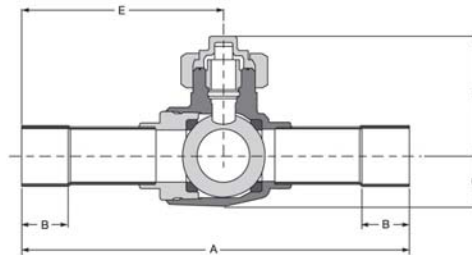
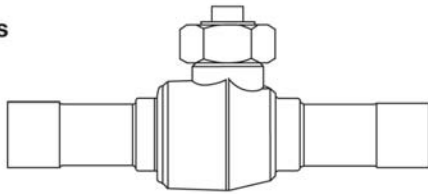
All sizes incorporate a dual stem seal design utilizing PTFE packing compressed by an internal packing nut forming the primary seal. The unique seal cap design permits valve operation without removal of the seal cap and uses PTFE gaskets to provide a secondary seal – a third Superior exclusive! There are no synthetic O-rings. Ball internal relief port design ensures shut-off in either direction of flow – even during evacuation of the system. Full flow ports in all sizes 3/8" through 3-1/8". These ball valves are non-directional flow valves and may be installed in any position.

- Continuous operating temperature (COT): -40°F to 325°F (-40°C to 163°C)
- Design pressure/Maximum abnormal pressure: Up to 800 PSIG
- UL® and cUL Listed, except for metric sizes and oxygen
- WAS Series includes access fitting, strategically located on tube extension
- No synthetic O-ring seals. Double seal protection provides a Superior stem design
- Polished brass or carbon steel ball
- Forged brass body and seal cap
- Seal cap design permits valve operation without removal of seal cap
- Contact factory or visit website for compatibility with CFC, HCFC, HFC and HFO refrigerants and oils.



WAWAS Series Ball Valves

WA Series

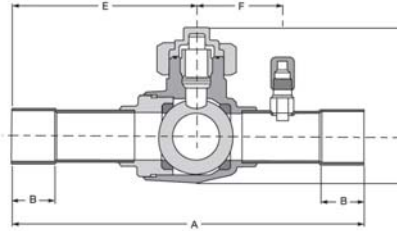
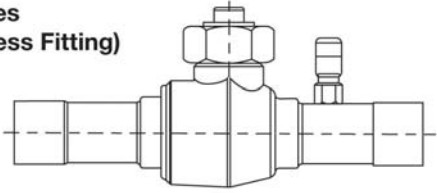


Part Number	Size (ODS)	Ball Port Diameter	Dimensions						Max Width	Cv	DP/MAP	UPC	Weight (lbs.)
			A	B Min	C	D	E	F					
Without Access Fitting													
586WA-4ST	1/4	0.50	6.50	0.31	0.58	1.80	3.44		1.16		800	685768412700	0.71
586WA-6ST	3/8	0.50	6.50	0.31	0.58	1.80	3.44	1.75	1.16	3.6	800	685768412717	0.71
586WA-8ST	1/2	0.50	6.50	0.38	0.58	1.80	3.44	1.75	1.16	7.4	800	685768412724	0.71
586WA-10ST	5/8	0.50	6.50	0.50	0.58	1.80	3.44	1.75	1.16	14.6	800	685768412694	0.66
587WA-12ST	3/4	0.75	6.56	0.62	0.73	1.96	3.46		1.45	22.3	800	685768412939	0.95
587WA-14ST	7/8	0.75	6.56	0.75	0.73	1.96	3.46	1.75	1.45	30	800	685768409977	1.00
591WA-11ST	1 1/8	1.00	7.69	0.91	1.03	2.37	4.01	1.89	2.05	62	800	685768412953	2.13
592WA-13ST	1 3/8	1.50	8.88	0.97	1.23	2.55	4.55	2.15	2.47	110	800	685768412069	3.22
593WA-15ST	1 5/8	1.50	9.13	1.09	1.42	2.73	4.62	2.21	2.83	135	800	685768412984	3.81
594WA-21ST	2 1/8	2.01	9.88	1.34	1.85	3.11	5.07	2.57	3.7	270	800	685768413004	7.50
594WA-25ST **	2 5/8	2.01	12.92	1.47	1.85	3.11	6.57		3.7	250	800	685768413011	9.60
594WA-31ST **	3 1/8	2.01	13.82	1.66	1.85	3.11	7.01		3.7	240	800	685768413028	10.13
595WA-25ST	2 5/8	2.44	12.92	1.50	2.30	3.95	6.52	3.35	4.65	340	800	685768413042	14.53
596WA-31ST	3 1/8	2.91	16.03	1.69	2.75	4.35	8.32	3.63	5.63	480	700	685768413066	24.85
596WA-35ST **	3 5/8	2.91	16.06	1.91	2.75	4.35	8.32		5.63	455	700	685768413073	27.40
596WA-41ST **	4 1/8	2.91	16.03	2.16	2.75	4.35	8.32		5.63	430	700	685768413080	0.00

** Reduced ports.

WAWAS Series Ball Valves

WAS Series
(with Access Fitting)



Part Number	Size (ODS)	Ball Port Diameter	Dimensions				Max Width	Cv	DP/MAP	UPC	Weight (lbs.)		
			A	B Min	C	D						E	F
With Access Fitting													
586WAS-6ST	3/8	0.50	6.50	0.31	0.58	1.80	3.44	1.75	1.16	3.6	800	685768412748	0.75
586WAS-8ST	1/2	0.50	6.50	0.38	0.58	1.80	3.44	1.75	1.16	7.4	800	685768412755	0.75
586WAS-10S	5/8	0.50	6.50	0.50	0.58	1.80	3.44	1.75	1.16	14.6	800	685768412731	0.75
587WAS-14S	7/8	0.75	6.56	0.75	0.73	1.96	3.46	1.75	1.45	30	800	685768412946	1.04
591WAS-11S	1 1/8	1.00	7.69	0.91	1.03	2.37	4.01	1.89	2.05	62	800	685768412960	2.18
592WAS-13S	1 3/8	1.50	8.88	0.97	1.23	2.55	4.55	2.15	2.47	110	800	685768412977	3.37
593WAS-15S	1 5/8	1.50	9.13	1.09	1.42	2.73	4.62	2.21	2.83	135	800	685768412991	3.85
594WAS-21S	2 1/8	2.01	9.88	1.34	1.85	3.11	5.07	2.57	3.7	270	800	685768413035	7.55
595WAS-25S	2 5/8	2.44	12.92	1.50	2.30	3.95	6.52	3.35	4.65	340	800	685768413059	14.58
596WAS-31S	3 1/8	2.91	16.03	1.69	2.75	4.35	8.32	3.63	5.63	480	700	685768413097	24.90

** Reduced ports.